

**CDC25C Antibody (Center)**  
**Purified Rabbit Polyclonal Antibody (Pab)**  
**Catalog # AP7862d****Specification**

---

**CDC25C Antibody (Center) - Product Information**

Application	WB,E
Primary Accession	<a href="#">P30307</a>
Reactivity	Human, Mouse
Host	Rabbit
Clonality	Polyclonal
Isotype	Rabbit IgG
Calculated MW	53365
Antigen Region	114-142

**CDC25C Antibody (Center) - Additional Information****Gene ID** 995**Other Names**

M-phase inducer phosphatase 3, Dual specificity phosphatase Cdc25C, CDC25C

**Target/Specificity**

This CDC25C antibody is generated from rabbits immunized with a KLH conjugated synthetic peptide between 114-142 amino acids from the Central region of human CDC25C.

**Dilution**

WB~~1:1000

E~~Use at an assay dependent concentration.

**Format**

Purified polyclonal antibody supplied in PBS with 0.09% (W/V) sodium azide. This antibody is prepared by Saturated Ammonium Sulfate (SAS) precipitation followed by dialysis against PBS.

**Storage**

Maintain refrigerated at 2-8°C for up to 2 weeks. For long term storage store at -20°C in small aliquots to prevent freeze-thaw cycles.

**Precautions**

CDC25C Antibody (Center) is for research use only and not for use in diagnostic or therapeutic procedures.

**CDC25C Antibody (Center) - Protein Information****Name** CDC25C

**Function** Functions as a dosage-dependent inducer in mitotic control. Tyrosine protein phosphatase required for progression of the cell cycle (PubMed:[8119945](#)). When phosphorylated,

highly effective in activating G2 cells into prophase (PubMed:[8119945](#)). Directly dephosphorylates CDK1 and activates its kinase activity (PubMed:[8119945](#)).

#### Cellular Location

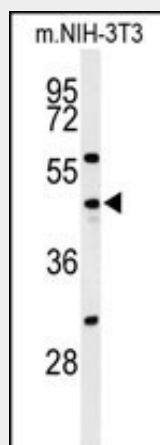
Nucleus

#### CDC25C Antibody (Center) - Protocols

Provided below are standard protocols that you may find useful for product applications.

- [Western Blot](#)
- [Blocking Peptides](#)
- [Dot Blot](#)
- [Immunohistochemistry](#)
- [Immunofluorescence](#)
- [Immunoprecipitation](#)
- [Flow Cytometry](#)
- [Cell Culture](#)

#### CDC25C Antibody (Center) - Images



Western blot analysis of CDC25C Antibody (Center) (Cat. #AP7862d) in NIH-3T3 cell line lysates (35ug/lane). CDC25C (arrow) was detected using the purified Pab.

#### CDC25C Antibody (Center) - Background

CDC25C is a tyrosine phosphatase and belongs to the Cdc25 phosphatase family. It directs dephosphorylation of cyclin B-bound CDC2 and triggers entry into mitosis. It is also thought to suppress p53-induced growth arrest.

#### CDC25C Antibody (Center) - References

Varmeh,S., Mol. Cancer Ther. 7 (12), 3789-3799 (2008)  
Long,J.M., Cell Cycle 7 (19), 3062-3073 (2008)  
Bonnet,J., Cell Cycle 7 (13), 1991-1998 (2008)